

## A new species of *Ropronia* from Burma (Proctotrupoidea, Heloridae)

By

KARL-JOHAN HEQVIST

### *Ropronia malaisei* sp.n.

Black, with the largest part between antennal sockets and posterior margin of clypeus yellowish-white. The lower part of head and upper part of abdomen brown. Scape and pedicel brown, flagellum dark brown. Fore coxae, trochanter and tarsus yellowish-white, the rest of the fore legs brown. Medio coxae, trochanter, basal part of femora, tibia and 1st tarsal joint yellowish-white, the rest brown-black. Hind legs black with trochanter, apex of femora and tibia, penultimate and ultimate tarsal joints brown. A white spot before tegulae.

Head (fig. 1) semicircular; face with a sharp longitudinal carina between antennal sockets and reaching half way to median ocellus. Malar space as long as half breadth of eye. Clypeus light convex, anterior margin straight. Mandibles with two teeth, the lower one much shorter than upper. Temples large. Eyes semiglobular. Antennae (14-jointed) with second flagellar segment twice as long as wide. Puncturation fine and distinct only on frons. Notaulices complete. Postscutellum with two large pits. Scutellum convex and smooth. Mesoscutum with medium-sized punctures, the diameter of one puncture the same as the distance between two punctures. Propodeum with very coarse reticulations. The longest spur of hind tibia as long as the gaster. The gaster smooth and shining. The body is clothed with greyish white hairs. Fore wings (fig. 2 and 3).

Length: 6 mm.

Holotype, 1 ♂ in Swedish Museum of Natural History, Entomological Department.

Locality: N.E. Burma, Kambaiti, 2000 m., 11.VI., 1934, coll. R. Malaise.

*R. malaisei* sp. n. is similar to *R. garmani* Ashm. and *R. watanabei* Yasm. and in some respects to *R. ishiharai* Yasm. and *R. townseni* Yasm. Differs from the first two species by having a semicircular head and a sharp longitudinal carina above the base of antennae. Puncturation is finer than in *R. garmani* Ashm. and *R. watanabei* Yasm. Second flagellar segment only two times as long as wide. The punctures of mesoscutum are finer. Malar space longer than in *R. garmani* Ashm. Venation in fore wing is different. From *R. ishiharai* Yasm. and *R. townseni* Yasm. this new species differs in having

*Entomol. Ts. Arg.* 80. H. 3-4, 1959

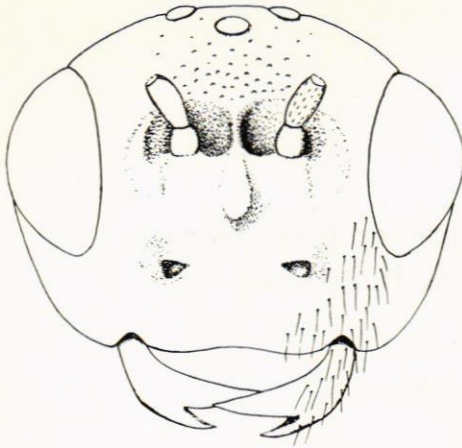


Fig. 1. *Ropronia malaisei* sp. n. Head in frontal view.

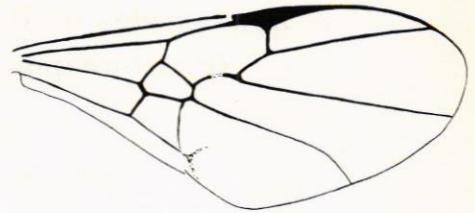


Fig. 2. *Ropronia malaisei* sp. n. Fore wing.

top of the head and mesoscutum punctate. It seems to be an intermediate species between *R. garmani* Ashm., *R. watanabei* Yasm. and *R. townseni* Yasm., *R. ishiharai* Yasm.

Following key is modified from Yasumatsu 1958.

### Key to the species of *Ropronia* Prov.

1. Head and thorax mostly or entirely ferrugineous; postscutellum elevated as an acute pyramid. (U.S.A.) ..... *R. californica* Ashm. 1899
- Head and thorax black, sometimes marked with white; postscutellum convex not conspicuously elevated ..... 2.
2. Nervulus antefurcal; frons and top of head coarsely rugosopunctate. (Canada and U.S.A.) ..... *R. pediculata* Prov. 1886
- Nervulus postfurcal; frons and top of head not rugosopunctate ..... 3.
3. Fore wing with a large fuscous spot below stigma .... *R. brevicornis* Town. 1948
- Fore wing without a spot ..... 4.
4. Head seen in front, much wider than high ..... 5.
- Head seen in front, subcircular in outline ..... 6.
5. Top of head with rather close, sharp medium-sized punctures; mesoscutum with medium-sized punctures separated by about their diameter. (U.S.A.)  
*R. garmani* Ashm. 1899
- Top of head with rather coarse, weak, rather small punctures; mesoscutum with medium-sized punctures, the diameter of one puncture greater than distance between two punctures. (Saghalien) ..... *R. watanabei* Yasm. 1958
6. Top of head fine punctate, mesoscutum fine punctate. (Burma) *R. malaisei* sp. n.
- Top of head impunctate, mesoscutum almost impunctate or with some very minute punctures ..... 7.
7. Head seen in profile, with eyes about as long as temples; second abdominal tergite, seen in profile, with a greatly curved dorsal line (♀); dorsal area of the abdominal petiole densely and distinctly punctured; second discoidal cell of fore wing narrow, distinctly more than twice as long as wide. (Japan)  
*R. townseni* Yasm. 1956

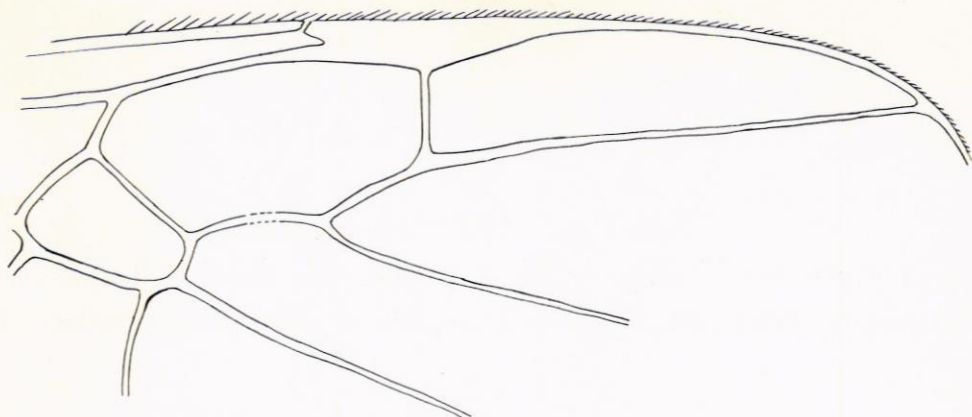


Fig. 3. *Ropronia malaisei* sp. n. Part of fore wing.

- Head, seen in profil, with eyes distinctly shorter than temples; second abdominal tergite, seen in profil, with a highly curved dorsal line (♀); dorsal area of the abdominal petiole with some irregular sculpture; second discoidal cell of fore wing not very narrow, about twice as long as wide. (Japan)

*R. ishiharai* Yasm. 1956

I am greatly indebted to Dr. H. Townes for the gift of *R. garmani* Ashm. and for the hint of literature.

#### Literature

- TOWNES, H. 1948. The Serphoid *Hymenoptera* of the family *Roproniidae*. — Proc. U.S. National Museum, **98**, no. 3224: 85—89.
- YASUMATSU, K. 1956. Two new species of *Roproniidae* (*Hymenoptera*). — *Insecta Matsumurana*, **19**, nos. 3—4: 117—122.
- 1958. A new species of the genus *Ropronia* from Saghalien. (*Hymenoptera, Roproniidae*). — *Insecta Matsumurana*, **21**, nos. 2—4: 112—114.