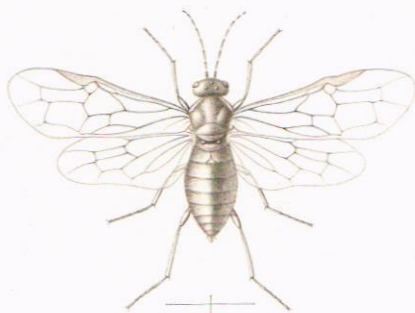


1



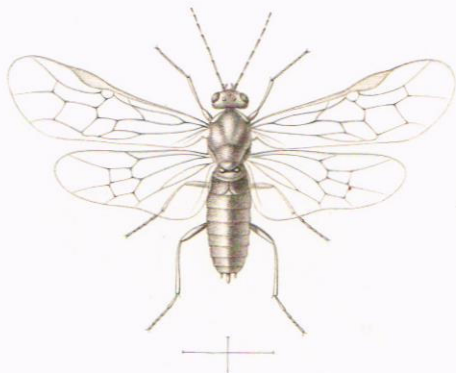
2



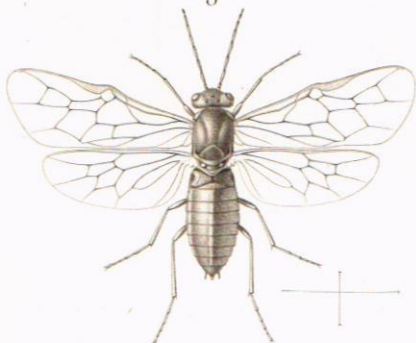
3



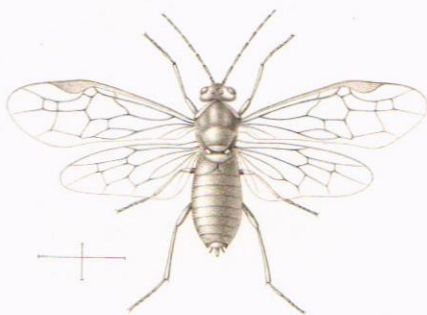
4



5



6

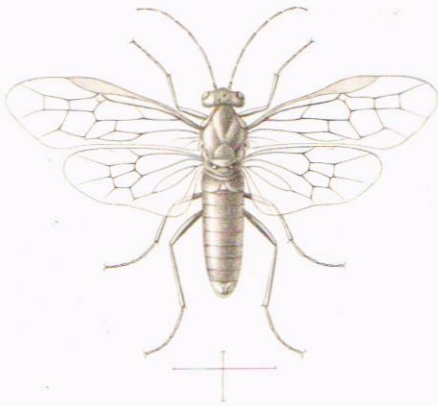


*A. M. Westergren del.*

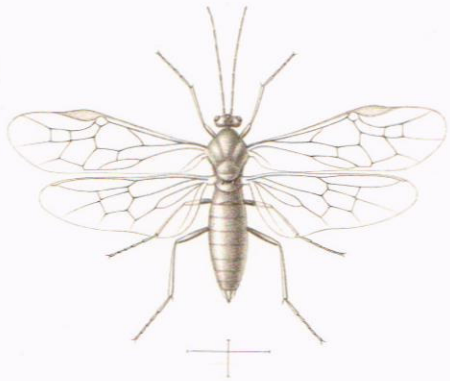
*Debray sc.*

1. *Nematus polaris*, Hgn.    2. *N. reticulata*, Hgn.    3. *N. morionella*, Hgn.  
4. *N. occipitalis*, Hgn.    5. *N. obscuripes*, Hgn.    6. *N. anceps*, Hgn.

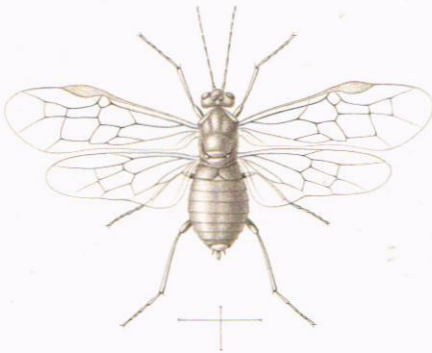
7



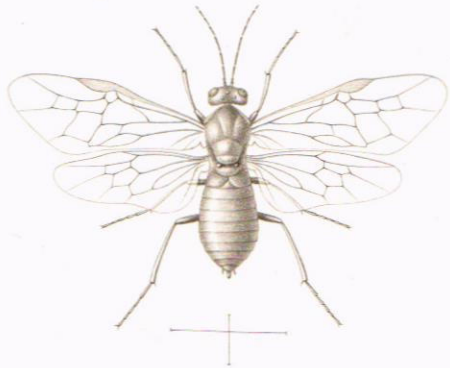
8



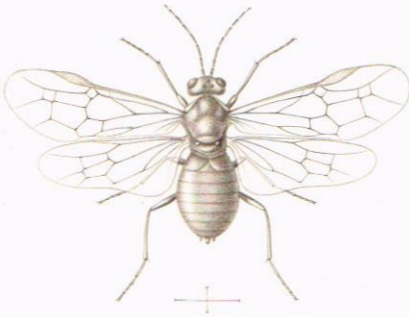
9



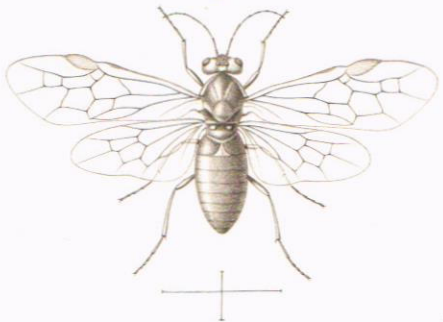
10



11



12

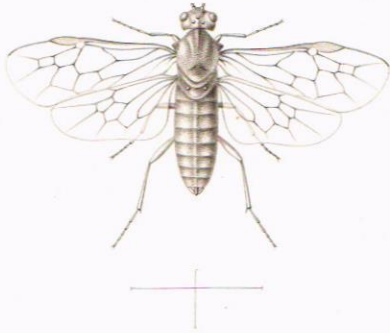


A. M. Westergren del.

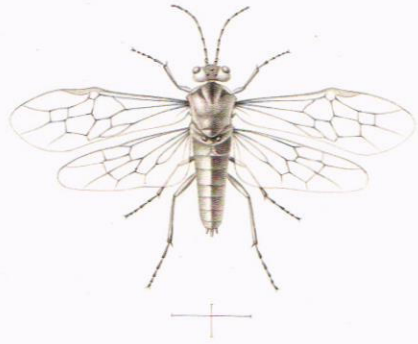
Debray sc.

7. *Nematus mysticus*, Hgn.    8. *N. frigidus*, Bohem.    9. *N. lientericus*, Hgn.  
 10. *N. nigriventris*, Hgn.    11. *N. parvulus*, Hgn.    12. *N. varipictus*, Hgn.

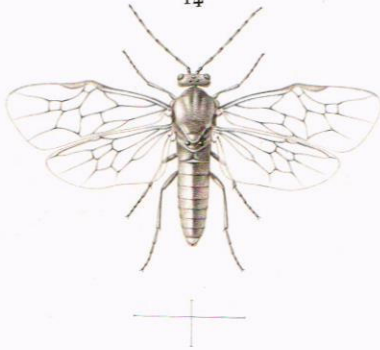
13 a



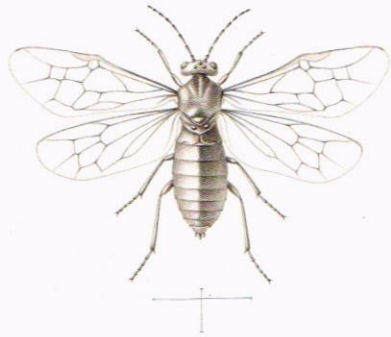
13 b



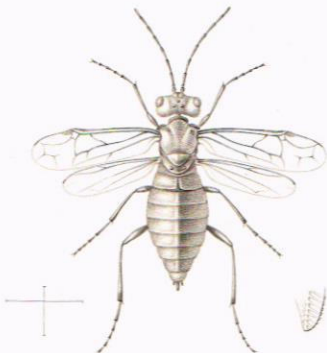
14



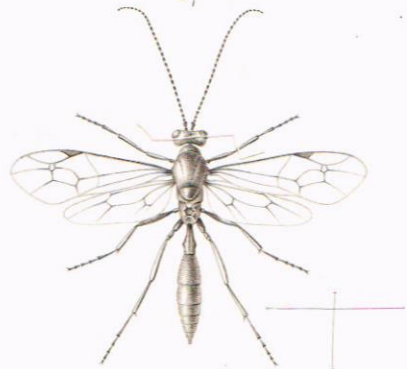
15



16



17



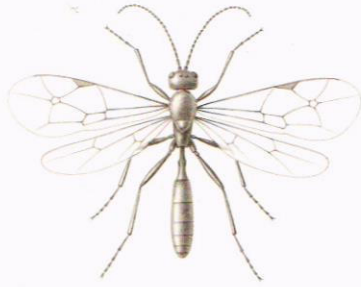
A. M. Westergren del.

Debray sc.

13. *Nematus picticollis*, Hgn. 14. *N. udus*, Hgn.

15. *N. extremus*, Hgn. 16. *N. abnormis*, Hgn. 17. *Phygadeuon waiğatschensis*, Hgn.

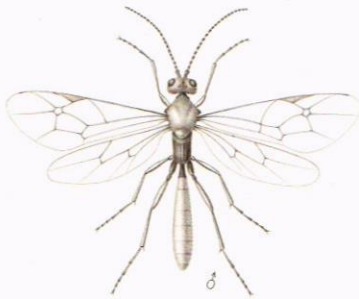
18



19



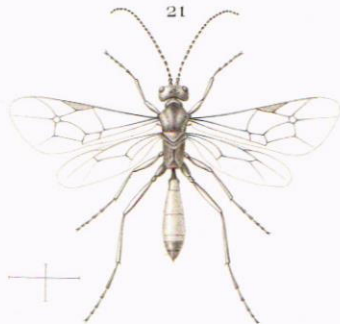
20 a



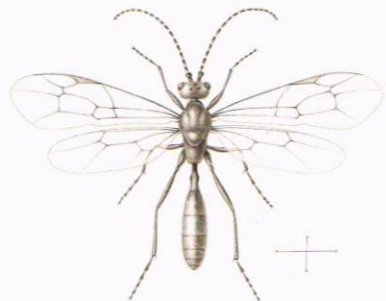
20 b



21



22



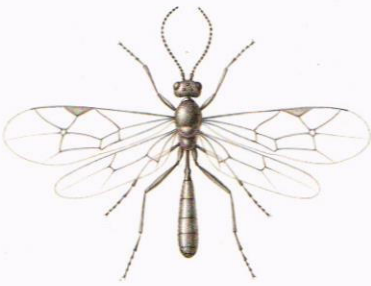
A. M. Westergren del.

Debray sc.

18. Phygadeuon nivalis. Hgn. 19. Ph. laticollis. Hgn.

20. Aptesis Nordenskiöldii. Hgn. 21. Ap. Palanderi. Hgn. 22. Atractodes aterrimus. Hgn.

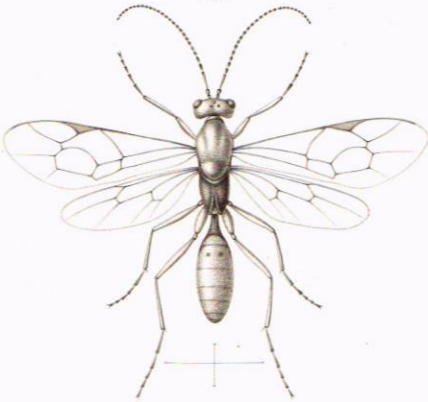
23



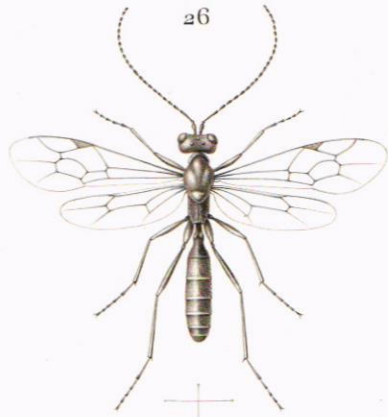
24



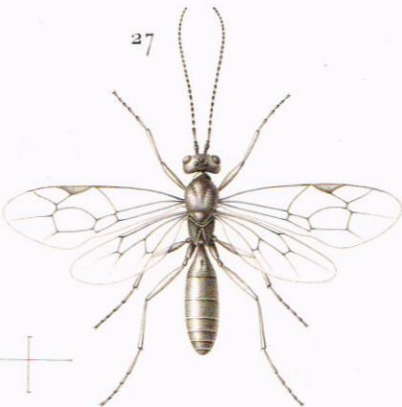
25



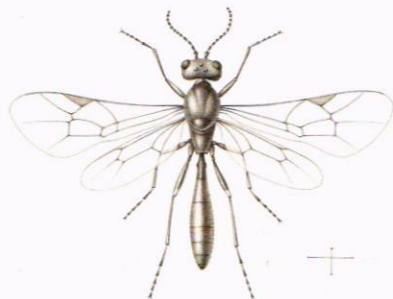
26



27



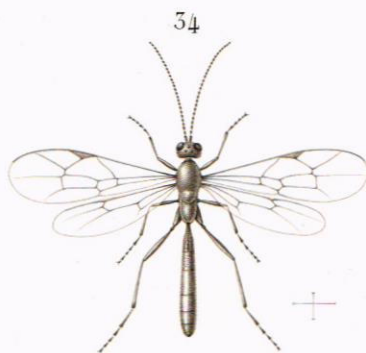
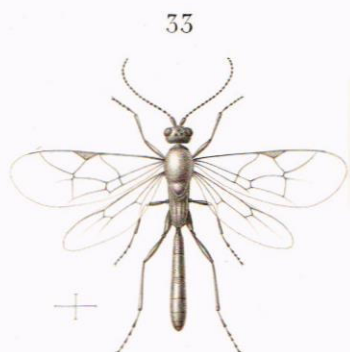
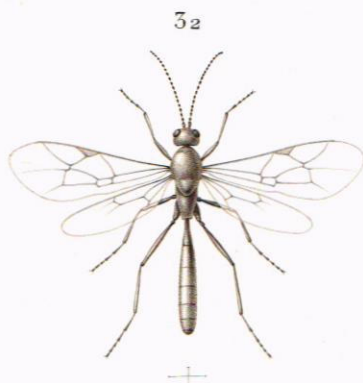
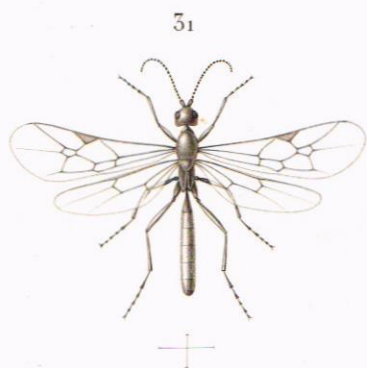
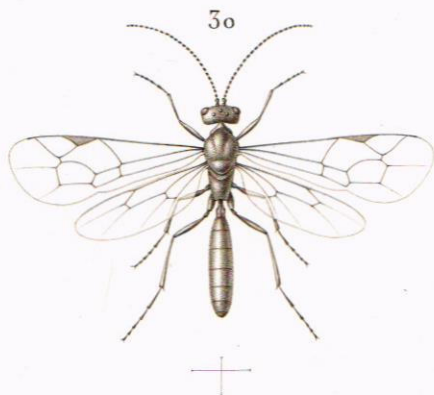
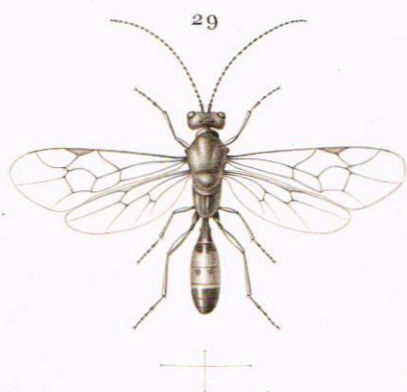
28



A. M. Westergren del.

Debray sc.

23. *Atractodes nigerrimus*, Hgn.    24. *Dicksonia arctica*, Hgn.    25. *Mesoleius Sahlbergi*, Woldot.  
 26. *M. Bovei*, Hgn.    27. *M. mixtus*, Hgn.    28. *Adeloğnathus frigidus*, Hgn.



*A. M. Westergren del.*

*Debray sc.*

29. *Polyblastus nigrifrons*, Hgn.

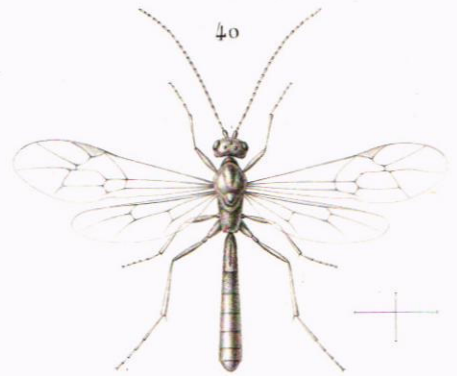
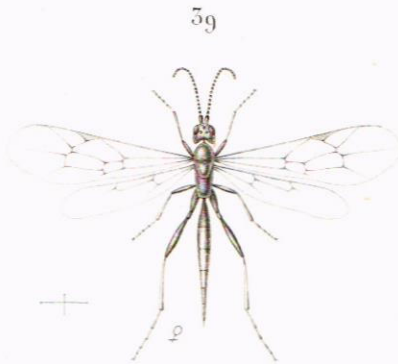
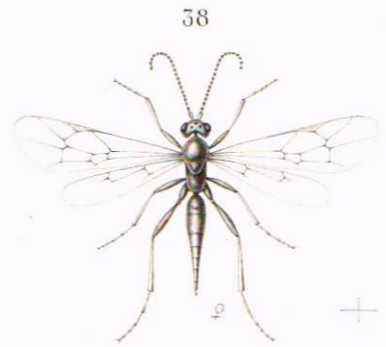
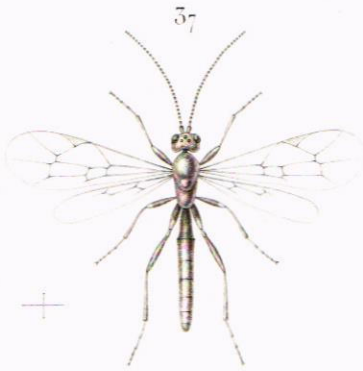
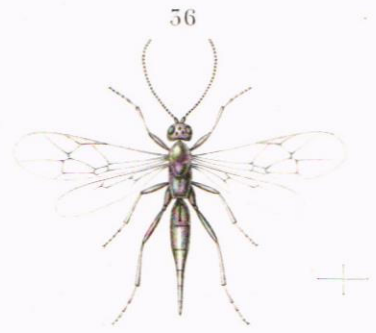
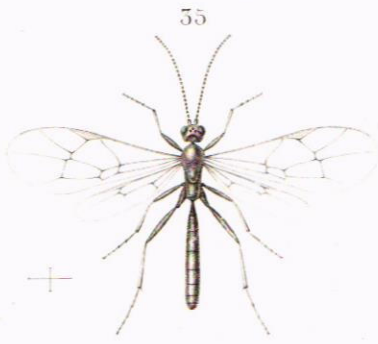
30. *Neastus loviceps*, Hgn.

31. *Orthocentrus protuberans*, Hgn.

32. *Orth. rivosus*, Hgn.

33. *Orth. solitarius*, Hgn.

34. *Orth. carinulatus*, Hgn.



A. M. Westergren del.

Picart et Debray sc.

35. *Orthocentrus dispar*, Hon.

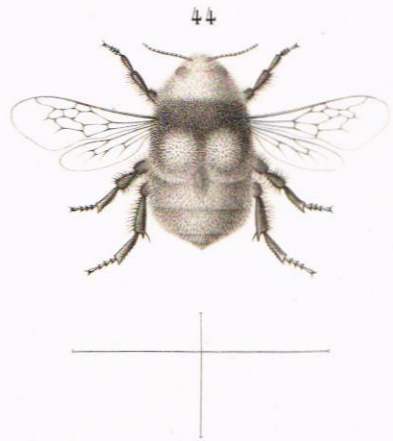
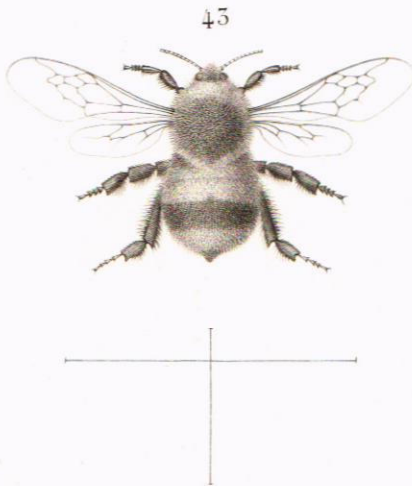
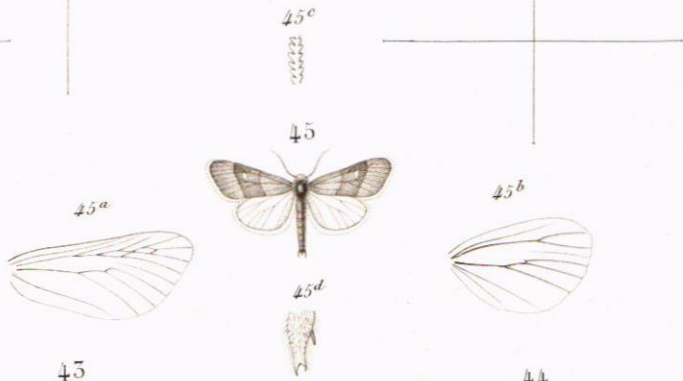
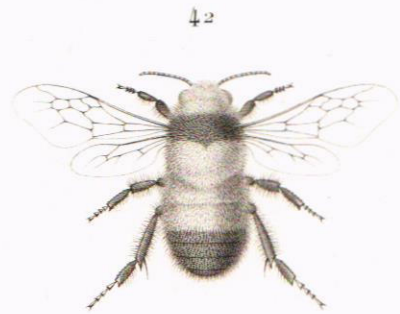
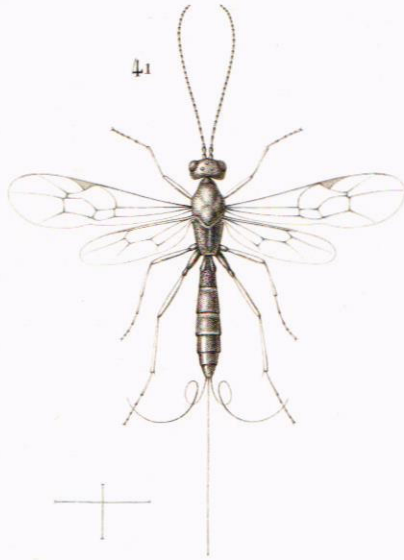
36. *Orth. validicordis*, Hgn.

37. *Ortho. hirticornis*, Hgn.

38. *Orth. hilaris*, Hon.

39. *Orth. laticollis*, Hgn.

40. *Sibriakoffia arctica*, Hgn.



A. M. Westergren del.

Picart et Debray sc.

41. *Lissonota commixta* Hgn. 42. *Bombus hyperboreus*.  
 43. *B. nivalis*. 44. *B. lapponicus*. 45. *Schoyenia arctica*.