

CHELONETHI FROM CAMERUN IN WESTAFRIKA  
COLLECTED BY Dr. YNGVE SJÖSTEDT.

BY

ALBERT JULLGREN.

**Chelifer** GEOFFROY 1763.

**Chelifer (Atemnus) Sjöstedti** n. sp.

The whole body very brilliant. Cephalothorax and abdominal segments very dark brown, the ventral segments paler. Pedipalpi blackish brown. Cheliceres more or less testaceous. Legs yellowish brown.

The breadth of the cephalothorax is a little more than two thirds of its length. The front is rounded, a little truncated in the middle. There are no distinct transversal furrows, but when the specimen is dry, two fine transversal black stripes are visible through the chitinous skin and above the second of them there is a shallow impression. The surface is smooth

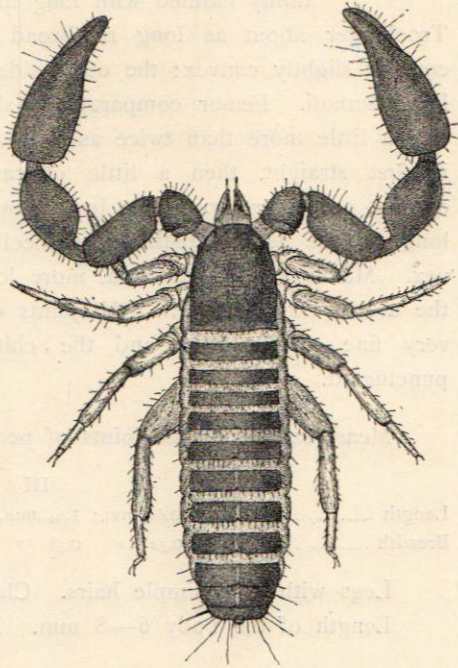


Fig. 1.

and has no or only some few and very fine wrinkles or striae and is thinly clothed with comparatively long simple hairs. Length 1,6 mm., breadth 1,1 mm.

Eye-spots two, situated at the base of the pedipalpi.

The dorsal segments of the abdomen smooth or very fine wrinkled. All nearly entire or some of the segments in the hind part (not the last one) divided by a fine longitudinal middle-stripe. All segments at the hind-margin with a row of comparatively long simple hairs situated on a small pale testaceous spot. The hairs of the last segment very long and fine.

Cheliceres very long. Galea very long and slender, at the apex with 6 very small teeth (conf. the fig. 2). Flagellum consists of three setæ, the first one is the greatest and has on its foremost edge about 6 teeth, the three first ones much smaller.



Fig. 2.

Pedipalpus of considerable thickness, about as long as the body. Coxæ smooth, thinly clothed with long fine simple hairs.



Fig. 3.

Trochanter about as long as broad with the inner contour slightly convex; the outer side with two very large tumuli. Femur comparatively short, pedicellated, a little more than twice as long as broad; the inner contour is first straight, then a little concave; the outer contour is convex and more so in the lower part of it. Tibia about as long as the femur, distinctly pedicellated, with both sides convex. Manus as long as tibia, more long than broad, longer than the a little curved digiti. All joints clothed with short or long very fine simple hairs and the chitinous skin is very finely punctuated.

#### Measurements of the joints of pedipalpi.

	II	III	IV	Va	Vb
Length .....	0,60 mm.;	1,24 mm.;	1,20 mm.;	1,20 mm.;	0,90 mm.
Breadth.....	0,52 »	0,58 »	0,68 »	0,82 »	

Legs with long simple hairs. Claws unarmed.

Length of the body 6—8 mm. Breadth 1,2—2 mm.

Of this, for the science new, species I have examined a



great number of specimens all collected at Itoki in Camerun by Dr. YNGVE SJÖSTEDT.

This species is without doubt one of the largest and most beautiful ones of all. Of another reason this species seems to me to be of a great systematic interest. The genus *Atemnus* has been characterized by having no transversal furrows on the cephalothorax. This is the most important characteristic by which this genus differs from the gen. *Chelifer*. As mentioned above a low impression above the second furrow is visible on the fullgrown specimen, when the body has been moistened, and when it is dry two very fine blackish stripes signify the furrows, but — however — there are no veritable furrows. On a young specimen the first furrow is comparatively distinct, but the second furrow is not visible. By these facts it is evident that the genus *Atemnus* CANESTR. is so closely related to the genus *Chelifer* that it is not to be regarded even as a subgenus (conf. BALZAN, *Chernetes (Pseudoscorpiones)*. Ann. Soc. Ent. Fr. T. 60. Paris 1891, p. 499.)

#### *Chelifer camerunensis* n. sp.

The body a little brilliant. Cephalothorax dark reddish-brown. Dorsal segments olivaceous-brown. Pedipalpi very dark brown. Cheliceres yellow-brown. Legs yellowish.

Cephalothorax is much longer than broad, rounded in front and a little truncated. The sides slightly divergent backwards; the hind-edge straight. The first transversal furrow very deep, procurved at the ends. In the middle the cephalothorax has a shallow longitudinal impression. The second furrow indistinct but the cephalothorax a little transversally impressed. The surface is granulated and has some few short simple hairs especially in the foremost part. Length 1,32 mm.; breadth 1,1 mm.

No eyes.

Dorsal segments of abdomen finely reticularly granulated. The length-furrow most visible in the hind-part of abdomen.

The hind edges of the segments with a row of short comparatively thick hairs. The hairs of the last segment very long and slender.



Cheliceres long. Galea (conf. the fig. 4) very long and slender, at the apex with 5 very small teeth. I have not seen the flagellum.

Pedipalpus of considerable thickness, longer than the body. Coxæ dull, thinly clothed with long fine simple hairs. Trochanter longer than broad with the inner contour slightly convex; the outer one strongly tuberculated and on the upper side a large conical a little pointed tumulus. Femur comparatively short, pedicellated, a little more than twice as long as broad; the inner contour convex at the apex a little concave; the outer contour more convex, in the middle flattish. Tibia about as long as the femur, convex, on both sides. Manus a little thicker than the tibia, slightly convex on both sides, longer than the curved digiti. All joints more or less granulated and clothed with simple or sometimes very little toothed hairs.

Fig. 4.

#### Measurements of the joints of pedipalpi.

	II	III	IV	Va	Vb
Length .....	0,62 mm.;	1,22 mm.;	1,1 mm.;	1,3 mm.;	0,72 mm.
Breadth .....	0,48 »	0,56 »	0,58 »	0,72 »	

Legs with long simple hairs. Claws unarmed.

Length of the body 3,6 mm.

One single specimen from Camerun, collected by Dr. YNGVE SJÖSTEDT.

#### **Chelifer Simoni** BALZAN l. c. 1891.

Of this species — formerly found in Sierra-Leone — one single specimen is captured in Camerun.

#### **Chthonius** C. KOCH 1843.

##### **Chthonius sinuatus** n. sp.

The body a little brilliant. Cephalothorax and abdominal segments pale yellow-brown, the ventral segments paler. Pedi-



palpi yellow-brown. Cheliceres of the same colour. Legs pale testaceous.

The length of the cephalothorax nearly equal with its breadth. The front-edge broadly truncated, in the middle a little impressed or sinuated. The sides parallel, a little inclined before the eyes. The chitinous skin is finely granulated and is very thinly clothed with comparatively long simple hairs, longest near the front-edge. Length 0,4 mm.; breadth 0,46 mm.

Eyes four, distinct; the front-eye a little more directed forwards; the interval between them as long as the diameter and the distance from the anterior margin of cephalothorax nearly as long.

Abdomen elongate; the dorsal segments smooth with a row of comparatively long hairs in the hind-edge.

Cheliceres comparatively large; the digiti at their inner edge with some short but strong teeth. The movable digitus has no tooth or prominence on the outer edge at the head. Flagellum consists of 4 or 5 long setæ of ordinary structure.

Pedipalpus slender, about as long as the body. Trochanter a little longer than broad; the inner contour slightly convex. Femur not pedicellated, the contours nearly parallel, the inner one first a little inclined then nearly straight, the outer one convex then straight, at the apex slightly convex. Tibia of ordinary shape. Manus a little shorter than digiti, a little more convex at the inner contour. Digiti very little curved. All joints clothed with simple hairs. Those of the femur are short and a little adpressed on the outer side and nearly thrice as long on the inner side.

Measurements of the joints of pedipalpi.

	II	III	IV	Va	Vb
Length .....	0,19 mm.;	0,5 mm.;	0,26 mm.;	0,34 mm.;	0,42 mm.
Breadth.....	0,14 »	0,14 »	0,17 »	0,2 »	»

Legs with long simple hairs.

Length of the body c. 1,5 mm.

One single specimen is captured in Camerun by Dr YNGVE SJÖSTEDT.

Upsala, March 20, 1901.