

*Deltocephalus hofferi* — a new species from  
Bohemia. (Homoptera-Auchenorrhyncha.)

By

J. DLABOLA.

This new species is to be placed to the *Deltocephalus abdominalis* group; it resembles a little a pale-coloured *Psammotettix exilis* Wagn.

Length ♂ 2,4—2,6 mm; ♀ 3,2—3,3 mm.

General coloration pale, greyish-white, here and there with yellow spots. Vertex darker, in the middle a lighter band, with the brown line not reaching the apex of the head. Behind, near the pronotum, are two light spots. Clypeus pale, obliquely dark banded; in the middle is a triangular band. Face yellowish. Antennae dark. Pronotum pale greyish, in front behind the head yellowish, nearly as long as the vertex in the middle and narrower than the head with the eyes, with 4 more or less distinct longitudinal brown bands. Scutellum yellowish, with a short transverse line in the middle. Elytra as long as abdomen (♂), or shorter (♀), pale greyish, rather subhyaline, in the distal part more or less brown emarginated, sometimes with two spots of the same colour in the middle of elytra. Thorax and abdomen, ventral surface of the body, and legs pale with dark brown spots.

*Diagnosis.* This species of the group *D. abdominalis* differs from other members by being smaller, pale, (never green-yellowish or green) and especially by its external and internal genitalia (fig. 1—8).

*Male.* Lobes of the pygophor toothed at their posterior extremity. Genital styles in the form of a sharp claw. Genital plates differing from those of all other species of the *abdominalis*-group by having the external margin without indentation. They are about two times as long as the valve, elongate, at their external margin sharply narrowed, apices of these plates rounded together. Penis roundly recurved, with two divergent processes in the apical part.

*Female.* VII, sternite with a tooth in the middle of the margin. The females may be easily determined by their small body and by having a pale white-greyish colour; other known species of this group are rather green and big.

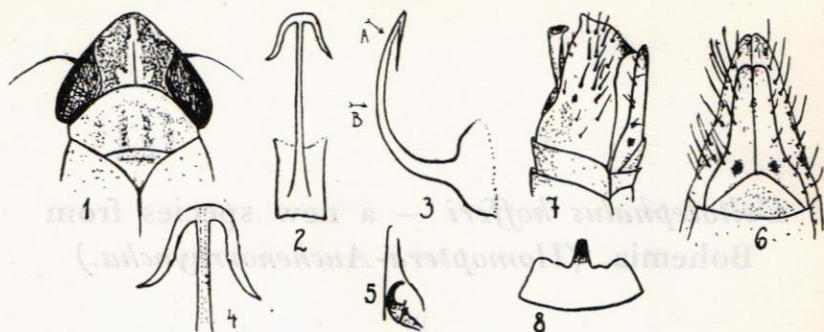


Fig. 1—8. *Deltocephalus hofferi* n. sp. 1. head and thorax, dorsal surface. 2 and 3. aedeagus. 4. apex of aedeagus. 5. subgenital plate with the stylus. 6. abdomen, ventral surface. 7. abdomen, lateral surface. 8. sternite VII, female.

*Type and paratype*: Central Bohemia: Děvín, environs of Praha, a large number of specimens collected in a xerotherm formation, region of limestone-steppe, lgt. Dlabola, 30.v. 1946. — Radotín, 1 ex. lgt. Dr. Hoffer, the same character of locality, 25.vi. 1944.

This interesting species, which is rather rare in Central Bohemia, is named in honour to Dr. A. Hoffer, collector of the first specimens, from whom I have obtained a large homopterological material from Bohemia and Moravia for study and determination. I desire here to thank also Dr. W. L. China, British Museum, for his advice concerning the placing of this new species in the genus.