

**A New Species of *Blacus* Nees Collected in Nests of
Bombus lapponicus F. in North Sweden
(Hym., Ichneumonoidea, Braconidae)**

By KARL-JOHAN HEDQVIST

Swedish Natural Science Research Council
c/o Dept. of Ent., Swedish Museum of Natural History
S-104 50 Stockholm 50, Sweden

Abstract

HEDQVIST, K.-J. A new species of *Blacus* Nees collected in nests of *Bombus lapponicus* F. in North Sweden (Hym., Ichneumonoidea, Braconidae). — Ent. Tidskr. 95: 184—185, 1974.

A new species of *Blacus* Nees, *B. nidicola* sp.n., is described. It was collected in nests of a bumble bee, *Bombus lapponicus* F. in Abisko, North Sweden.

During his studies of bumble bees in North Sweden Mr B. G. Svensson has collected some parasitic Hymenoptera, among them specimens of a new species of the genus *Blacus* Nees. It is described below.

Blacus nidicola sp.n.

♀. Black with gaster brownish black. Legs and wing veins brown.

Head (fig. 1 A, B) smooth. Antennae (fig. 1 D) inserted nearer to median ocellus than to the base of clypeus and with 17 joints. All flagellar joints except first joint equal in length. Ocelli in an equilateral triangle. Thorax finely punctated, in front of scutellar furrow at junction of notauli a rugose triangular area. Scutellar furrow rugose. Scutellum flat not margined, smooth on the disc and punctated laterally. Thorax all over hairy, strongly so along notauli. Sternauli rugose. Propodeum rugose with indistinct areolation. Gaster as long as thorax + head.

Terebra nearly half as long as gaster. Fore wing see fig. 1 C.

♂. Unknown.

Length: 2.8—3.0 mm.

Holotype: in coll. mea, Torne Lappmark, Abisko, 9/8 1972, leg. B. G. Svensson, collected in nests of *Bombus lapponicus* F.

Paratype: 2 ♀ (in coll. mea) from the same locality as holotype.

Blacus nidicola sp.n. belongs to the *exilis* group (see Haeselbarth 1973) and is similar to *Blacus tobiae* Haeselb. but differs as follows: Terebra is longer, nervulus meet discoideus before the middle, the shape of propodeum is more rounded (not cubic as in *B. tobiae* Haeselb.) and scutellum flat.

Reference

HAESELBARTH, E. 1973. Die *Blacus*-Arten Europas und Zentral-Asiens. — Veröff. zool. StSamml. Münch. 16: 69—170.

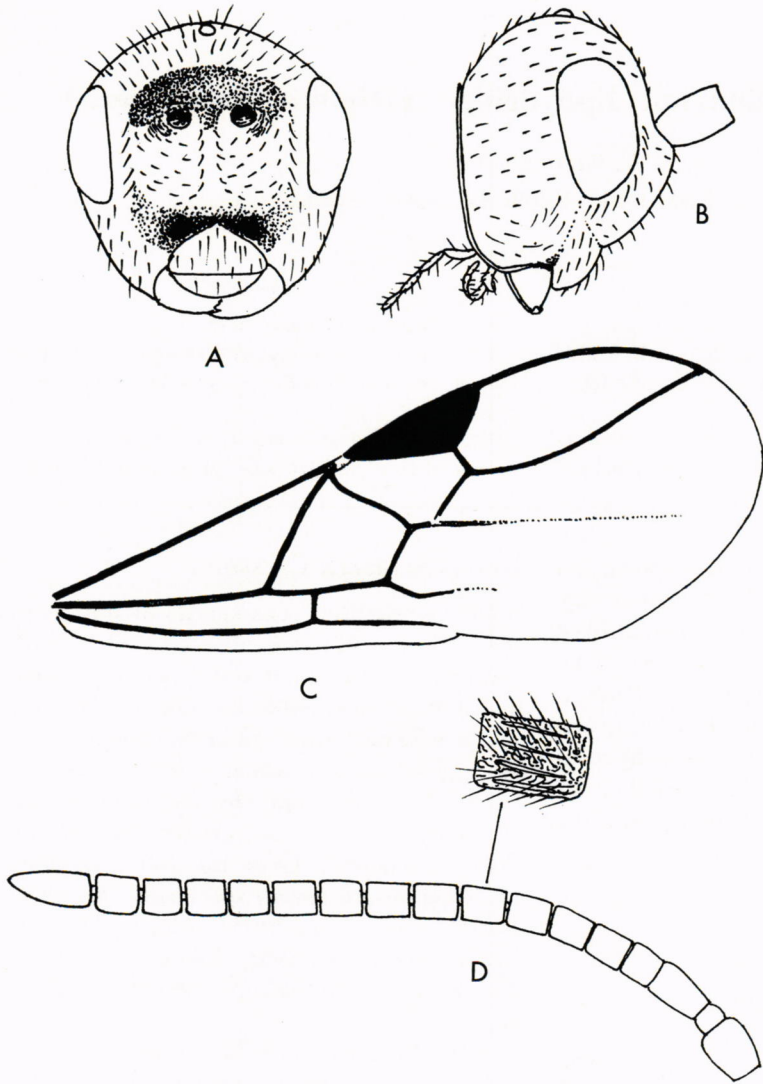


Fig. 1. *Blacus nidicola* sp.n. ♀. — A. Head in frontal view. B. Head in lateral view. C. Fore wing. D. Antenna.