

## A supplementary note on *Hormiinae* (Hym., *Ichneumonoidea*, *Braconidae*)

Redescription of *Noserus facialis* Först.

By

KARL-JOHAN HEDQVIST

After finishing his study of *Hormiinae*, Ent. Tidskr., 84, p. 30, 1963, the author had an opportunity to study the syntypes of *Noserus facialis* Först. A redescription of the species is therefore given below.

The author wants to express his sincere gratefulness to Dr. E. Königsmann for making specimens available.

### *Noserus facialis* Först.

Förster, Verh. Nat. Ver. Preuss. Rheinl., 19, p. 241, 1862.

♀. Brown, darker coloured dorsally. Legs, the lower part of head and scape yellow with tint of brown. Wing veins pale brown.

Head (fig. 1 A, B) with occiput margined; below the base of antennae somewhat gibbous. Antennae 24-jointed. Maxillary palpus 5-jointed, labial palpus 4-jointed. Scape short and stout. Malar space equal half the breadth of the eye. Head covered with sparse hairs. Mesonotum strongly vaulted. Notaulices crenulated and converging in a shallow, somewhat rugulos impression in front of prescutellar groove. Scutellum small, smooth. Propodeum strongly rugose. Mesopleura having a longitudinal fovea with cross-carinae. Thorax entirely covered with scattered, sparse hairs. Gaster as in *Hormius* Nees, only 1st segment dorsally sclerotized and as long as wide at apex. Ovipositor short. Legs slender. Wings see fig. 1 C.

♂. Similar to the female but stigma darker (dark brown).

In the Förster collection of Zoologisches Museum der Humboldt-Universität zu Berlin 1 ♀ and 3 ♂♂ stand under the name *Noserus facialis*. The author has selected as lectotype a female, which is placed together with 1 ♂ on a tag. The lectotype is marked with a red triangle. The specimens bear the following labels:

24/686 Aachen June = 1 ♂ and 1 ♀ (lectotype)

24/684 ,, ,, = 2 ♂♂.

*Noserus facialis* Först. belongs to the *Hormius*-group (see Ent. Tidskr. 84, p. 31, 1963).

Entomol. Ts. Arg. 84. H. 3-4, 1963

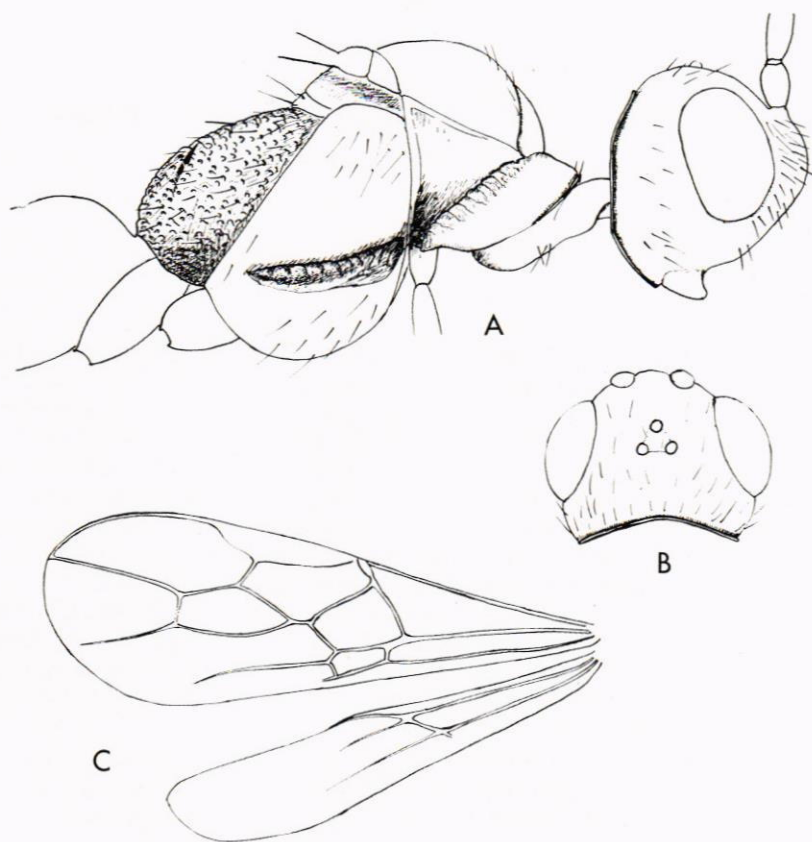


Fig. 1. *Noserus facialis* Först., A. Thorax and head in lateral view. B. Head in dorsal view. C. Fore — and hind wing.