

## A New Species of *Nepticula* v. Heyden from Rhodes (Lep. Nepticulidae)

By BERT GUSTAFSSON

Swedish Museum of Natural History, Section of Entomology,  
S-104 05 Stockholm, Sweden

### Abstract

GUSTAFSSON, B. A new species of *Nepticula* v. Heyden from Rhodes (Lep. Nepticulidae). — Ent. Tidskr. 94: 197—198, 1973.

The new species *Nepticula robiniella* from Rhodes, reared from a leafmine on *Robinia*, is described and reproduced.

At the beginning of May, 1973 Mr. Lars-Åke Janzon, Swedish Museum of Natural History, spent some time on Rhodes. In the City of Rhodes Mr. Janzon when searching for Lepidoptera in the park that surrounds

the Old Town, discovered a *Nepticula* mine in a leaf of a *Robinia*-tree (probably *R. pseudoacacia* L.). The leaf was put in a wet paper-bag 1.V., and 3.V. the larva had left the mine and spun the cocoon inside the paper-bag. The adult emerged from the cocoon 14.V.

The specimen represents a new species which is described below.

*Nepticula robiniella* n.sp. (Fig. 1).

Alar exp. ♀ 4.5 mm. Head whitish-grey with dark-grey hairs intermixed. Eye-caps

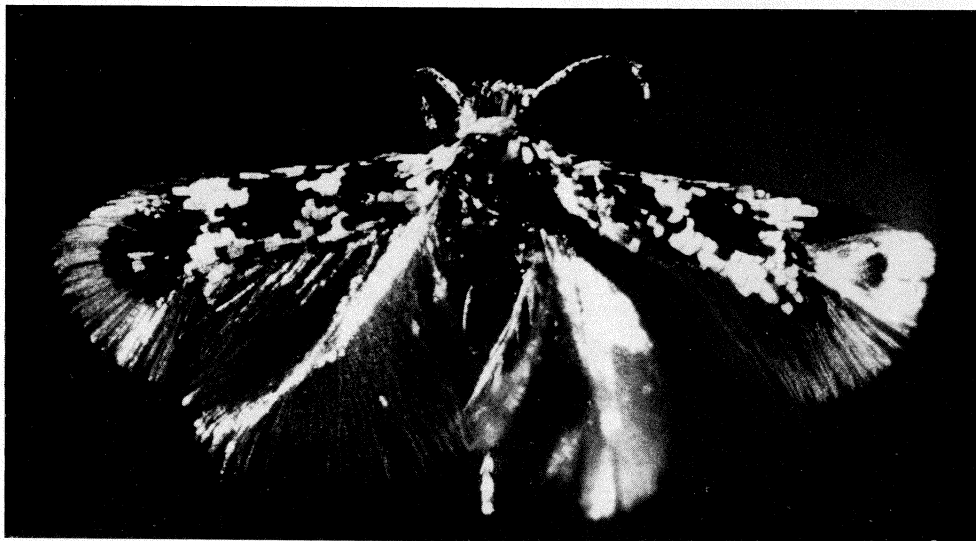


Fig. 1.



Fig. 2.

and collar white. Between eye-caps and antennae a crown of black scales. Antennae dark-grey, on the tips and basal joints silvery-grey. Mid- and hindlegs silvery-grey

with dark-grey spots. Forewings black with white scales sprinkled over the whole width. Hindwings and cilia silvery-grey.

The mine of *robiniella* (Fig. 2) is a linear upper side mine gradually increasing to a breadth of 1 or 1 1/2 mm. A semicircular slit is cut in the upper epidermis. The excrements are black and in the first two thirds of the mine the frass is deposited scattered across almost the entire breadth, in the last third in a line along the middle. The egg is deposited on the underside of the leaf. The cocoon is yellowish white.

The new species seems to take a rather isolated position within the genus with regard to external characters. In the wing-colouration it resembles *N. jubae* Walsingham, a species living on *Euphorbia regis-jubae* on the Canaries.

Holotype ♀ from the City of Rhodes, reared from a larva found 1.V. 1973 on *Robinia* sp.; imago emerged 14.V. 1973.

The type specimen is preserved in the collection of the Swedish Museum of Natural History, Stockholm.

The photographs are taken by Mr. Uno Samuelsson, Swedish Museum of Natural History, Stockholm.

## References

- STANTON, H. T. 1869. The Tineina of Southern Europe (pp. 229—230). London.
- WALSINGHAM, Lord 1907. Microlepidoptera of Tenerife. — Proc. zool. Soc. Lond. 14: 911—1028. London.