

# Notes on North Swedish Plecoptera

By LUIS A. BENEDETTO

Limnologische Flußstation, D-6407 Schlitz/Hessen, BRD

## Abstract

BENEDETTO, L. A. Notes on North Swedish Plecoptera. — Ent. Tidskr. 94: 20—22, 1973.

The article deals with some morphologically and faunistically interesting findings made in a material of stoneflies collected in the north of Sweden. The apical part of the ♂ and ♀ abdomen of *Nemoura sahlbergi* Morton and three forms of the female subgenital plate of *Diura nanseni* Kempny are figured.

During a stay with professor Per Brinck at the Zoological Institute of the Lund University I had an opportunity to work on a very large material of stoneflies collected in 1960—1967 in the northern parts of Sweden. The stonefly fauna of Sweden is wellknown, so the new evidence produced consists of locality records mainly, what will not be recorded here. In the material of 10.883 specimens there were however also a few morphologically or faunistically interesting findings which will be dealt with below.

## 1. *Nemoura sahlbergi* Morton, 1896

There are few Scandinavian records of this rare species (Brinck 1949, 1952; Brinck & Froehlich 1960; Meinander 1965; Thomas 1969; Lillehammer 1972).

In the present collection there are 26 specimens from the following two localities:

Lule Lappmark: Skalka, outlet of stream 4 km ESE Granudden, loc. No. 23, 7.7.1966, 1 ♂ + 11 ♀♀, leg. P. Brinck & C. Gustafson.

Torne Lappmark: NW of Nedre Kilpisjärvijokk, SE Salmiaive, loc. No. 34, 29.6.1961, 3 ♂♂ + 11 ♀♀, leg. P. Brinck, T. Askaner, L. Cederholm & S. Ulfstrand.

I add illustrations of the posterior part of male and female abdomen (Fig. 1). In all Swedish female specimens there seems to be a tendency of the cercal apex to be bent outwards.

## 2. *Diura bicaudata* Linné, 1758

There is a considerable variation in the female subgenital plate (cf. Brinck 1949, Fig. 5). In the present material there is a female from Jämtland (Hottöjen, outlet of River Aumån, loc. No. 10, 8.7.1972, leg. A. & S. Ulfstrand) which agrees with the North American type illustrated by Brinck (l.c.).

## 3. *Diura nanseni* Kempny, 1900

There is a considerable variation in the shape of the female subgenital plate. Besides the three forms illustrated by Brinck (1949, Fig. 6), I have found three more (Fig. 2).

## 4. *Isoptena serricornis* Pictet, 1841

This is a rare species in Scandinavia, recorded for Sweden by Illies (1953). In the

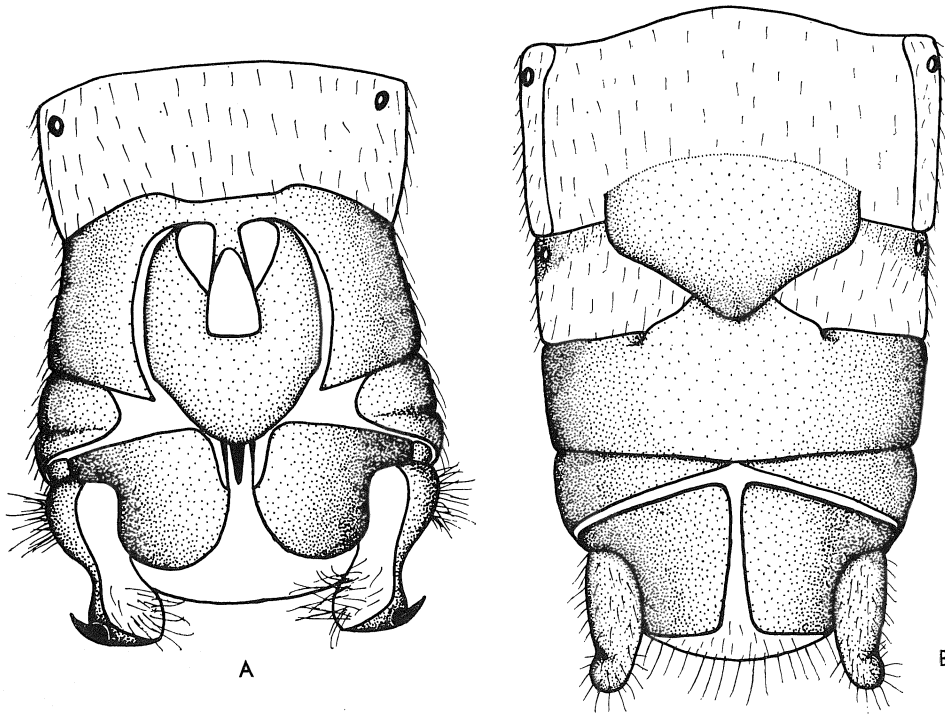


Fig. 1. *Nemoura sahlbergi* Morton. A. Apical part of male abdomen, ventral view. — B. Apical part of female abdomen, ventral view.

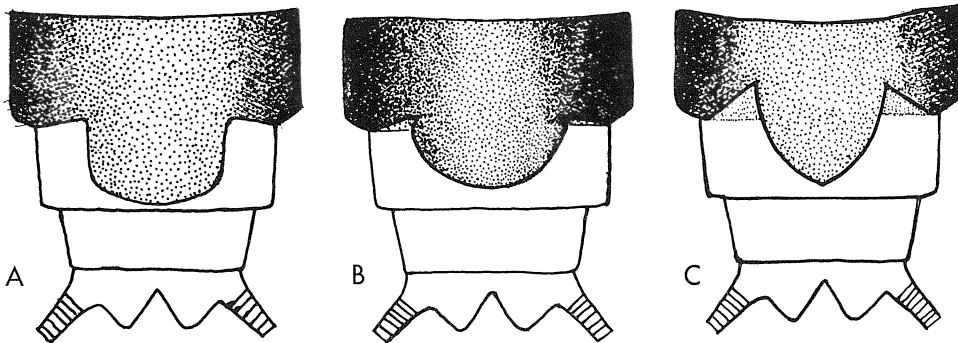


Fig. 2. *Diura nanseni* Kampny. Shape of female subgenital plate in specimens from: A and B. Lycksele Lappmark, Guortajokk outlet in Guortajaure, 21 km WNW Kittelfjäll. — C. Jämtland. Bådsjösun-det, 2,5 km W Tännforsen.

present material the following specimens were found:

Norrbotten: Kätkesuando, 51 km SE Karesuando, loc. No. 44, 3.7.1961, 2 ♀♀, leg. P. Brinck, T. Askaner, L. Cederholm & S. Ulfstrand.

Norrbotten: River Torne älv, Kattilakoski, 15 km S Svanstein, loc. No. 5, 17.6.1961, 2 ♂♂, leg. T. Askaner & S. Ulfstrand.

Torne Lappmark: River Kalix älv, 5 km SW Parakka, 25 km S Vittangi, loc. No. 49, 4.8.1961, 1 ♂, leg. P. Brinck, T. Askaner, L. Cederholm & S. Ulfstrand.

## References

- BRINCK, P. 1949. Studies on Swedish Stoneflies (Plecoptera). — Opusc. ent. Suppl. 11: 1—250. Lund.
- 1952. Bäcksländor, Plecoptera. — Svensk Insektfauna 42: 1—128. Stockholm.
- & FROELICH, C. 1960. On the stonefly fauna of western Lule Lappmark, Swedish Lapland. — K. fysiogr. Sällsk. Lund Förh. 30, 1: 1—19. Lund.
- ILLIES, J. 1953. *Isoptena serricornis* Pict. (Plecoptera) neu für Skandinavien. — Ent. Tidskr. 74: 86—93. Stockholm.
- LILLEHAMMER, A. 1972. Notes on the Stonefly *Nemoura sahlbergi* Morton with a Description of the Nymph. — Norsk Ent. Tidsskr. 19: 157—159. Oslo.
- MEINANDER, M. 1965. List of the Plecoptera of Eastern Fennoscandia. — Fauna fenn. 19: 1—38. Helsinki.
- THOMAS, E. 1969. Die Plecopterenfauna des Kaltisjokk. — Ent. Tidskr. 90: 15—18. Stockholm.